

T-DRILL

PRODUCTIVITY AS A PRODUCT.

NEW!



COLLARING MACHINE

Transportable Collaring Machine

T-115

T-115

TRANSPORTABLE COLLARING MACHINE

Advanced technology for productive pipe branching:
T-DRILL T-115 produces extruded outlets for branch connections directly on run tubes up to 323,9 mm (12"). The max. branch tube diameter is 114,3 mm (4").

The entire process from pilot hole milling to trimming is carried out in three steps on a single workstation.

The **T-DRILL** method of branching is applicable to almost all malleable materials including stainless steel, carbon steel, copper, copper-nickel, nickel, brass and aluminium alloys.

The machine is 800 mm (32") wide and movable by manual- or motorized forklift. The delivery package includes a convenient Tool Table for easier machine usage and tool service.



T-115

APPLICATIONS

T-DRILL T-115 is designed for factory and on-site use for various industries, such as:

- Stainless Steel Enterprises (e.g. pumps, valves, Food & Dairy, Water Treatment)
- HVAC (e.g. heat exchangers, air pumps, radiators)
- Shipbuilding (e.g. clean & waste water, ballast water, air handling, engine tubes)
- Automotive & Aviation
- Special Applications



Tube Measuring Table for T-115

T-115 Measuring Table is a productive solution when there are several outlets in one run tube. The tube measuring table enables precise positioning of collar holes.

When operator makes the tube positioning, the axial- and radial values can be seen from a digital display. After the accurate positioning has been reached, the tube clamps will be closed and the collar will be processed.

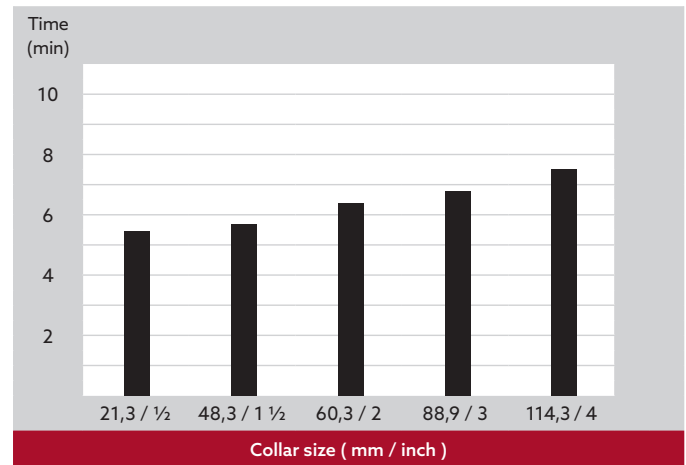
The measuring table is suitable for tube diameters up to $\text{Ø}323,9$ mm (12"). Standard lengths for 3000 mm (95") and 6000 mm (118") tubes.



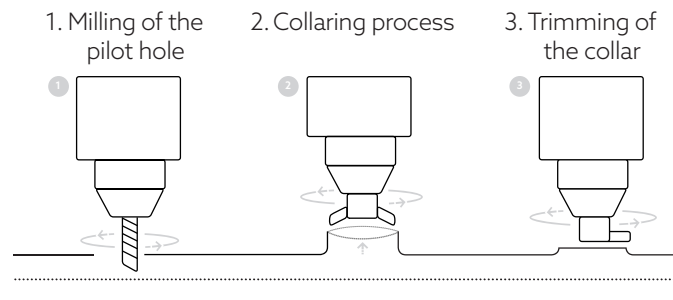
T-115 Capacity

Run tube outside diameter	Branch tube outside diameter									
	19	21,3	26,9	33,7	42,4	48,3	60,3	73	88,9	114,3
mm	inch	1/2	3/4	1	1 1/4	1 1/2	2	2 1/2	3	4
33,7	1,5	1,5	2,0	2,0	-	-	-	-	-	-
1	0.060	0.060	0.080	0.080	-	-	-	-	-	-
42,4	2,0	2,0	2,3	2,6	2,6	-	-	-	-	-
1 3/4	0.080	0.080	0.091	0.102	0.102	-	-	-	-	-
48,3	2,0	2,0	2,3	2,6	2,9	2,9	-	-	-	-
1 1/2	0.080	0.080	0.091	0.102	0.114	0.114	-	-	-	-
60,3	2,0	2,0	2,3	2,9	2,9	3,2	3,2	-	-	-
2	0.080	0.080	0.091	0.114	0.114	0.126	0.126	-	-	-
73	2,0	2,0	2,3	2,9	3,2	3,6	3,6	3,6	-	-
2 1/2	0.080	0.080	0.091	0.114	0.126	0.142	0.142	0.142	-	-
88,9	2,0	2,0	2,3	2,9	3,2	3,6	3,6	4,0	4,0	-
3	0.080	0.080	0.091	0.114	0.126	0.142	0.142	0.157	0.157	-
114,3	2,0	2,0	2,3	2,9	3,6	3,6	4,5	4,5	4,5	4,5
4	0.080	0.080	0.091	0.114	0.142	0.142	0.177	0.177	0.177	0.177
141,3	2,0	2,0	2,3	2,9	3,6	4,0	4,5	4,5	4,5	5,0
5	0.080	0.080	0.091	0.114	0.142	0.157	0.177	0.177	0.177	0.197
168,3	2,0	2,0	2,3	2,9	3,6	4,0	4,5	4,5	5,0	5,0
6	0.080	0.080	0.091	0.114	0.142	0.157	0.177	0.177	0.197	0.197
219,1	2,0	2,0	2,3	2,9	3,6	4,0	4,5	4,5	5,0	5,0
8	0.080	0.080	0.091	0.114	0.142	0.157	0.177	0.177	0.197	0.197
273	2,0	2,0	2,3	2,9	3,6	4,0	4,5	4,5	5,0	5,0
10	0.080	0.080	0.091	0.114	0.142	0.157	0.177	0.177	0.197	0.197
323,9	2,0	2,0	2,3	2,9	3,6	4,0	4,5	4,5	5,0	5,0
12	0.080	0.080	0.091	0.114	0.142	0.157	0.177	0.177	0.197	0.197

Process times for T-115



THE T-DRILL PROCESS



The information included in this brochure is subject to revision without notice. In case of thicker pipe walls, also stronger complete collaring heads available. Please contact T-DRILL Sales for more information.

DO IT WITH T-DRILL

Cut costs – Improve quality – Increase profit

- No T-fittings
- No costly inventories
- No tube cutting

- Only one welded joint
- Minimized inspection cost
- Tee ratio variation flexibility

- Smaller risk of leakage
- Optimized flow-characteristics
- Hygienic, clean weld points

MANUFACTURER:

T-DRILL

T-DRILL OY
 Ampujantie 32
 66400 Laihia, FINLAND
 Tel. +358 6 475 3333
 sales@t-drill.fi
 www.t-drill.fi

REPRESENTED BY:

T-DRILL Industries Inc.
 1740 Corporate Drive,
 Suite #820, Norcross,
 Georgia 30093 USA
 Tel. 800-554-2730
 sales@t-drill.com
 www.t-drill.com