

# T-DRILL

PRODUCTIVITY AS A PRODUCT.

**NEW!**



## COLLARING MACHINE

Portable Heavy Duty Collaring Machine for Stainless Steel pipes

**T-65 SS**

**T-65B SS**



# T-65 SS & T-65B SS HEAVY DUTY TEE FORMING MACHINE

The powerful **T-DRILL T-65 SS** is an ideal portable solution for making tee joints of O.D. 17 - 54 mm in main run tubes up to 300 mm in just a couple of minutes. While giving comparable quality to commercial tee fittings, the profit will increase since the **T-65 SS** eliminates cutting of pipe, two welded joints and the fitting cost.

If tube polishing is required at the welding points, the **T-65 SS** also reduces that, as well as any inspection costs. The branch pipe can be connected to a formed outlet either by orbital welding or by manual welding.



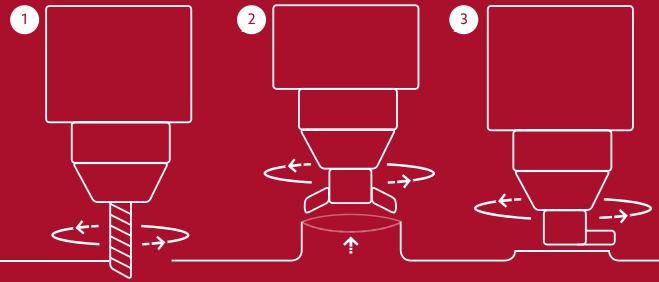


# THE T-DRILL PROCESS

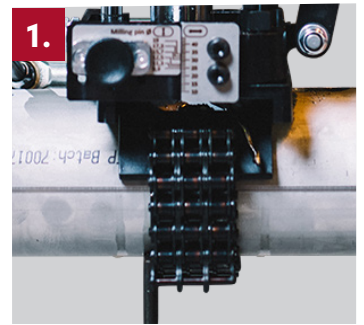
1. Pilot hole milling

2. Collaring

3. Trimming



## T-65 Stainless Steel for 17–54 mm branching



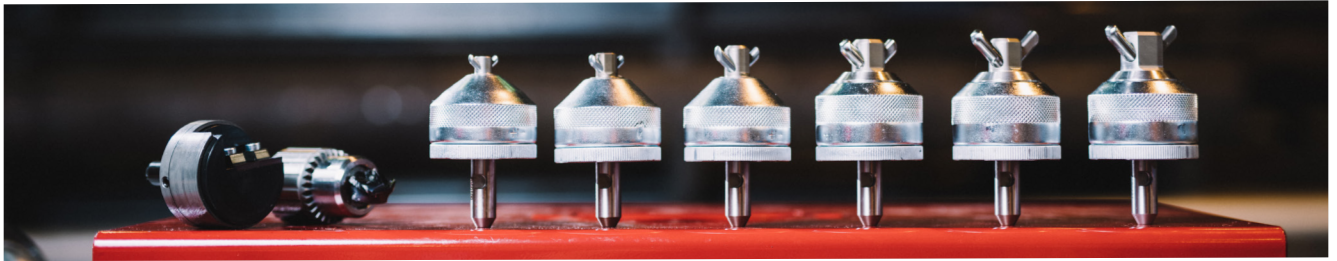
The **T-65 SS** is an excellent solution to be used both in construction and renovation projects, as well as in the demanding field conditions in maintenance, repair work and the process industry.

1. The machine has a universal clamping system for run tubes 25–114 mm with easy pilot hole adjustment.

2. The T-DRILL collaring heads with stepless adjustment ensures exactly precise collar sizes.

3. The T-65 SS is easy and convenient to use, as it has two handles; the upper one for drilling through and the other one for pilot hole side movement.

4. The machine is available also as a cordless T-65B SS 28V Lithium-Ion version for even easier handling.



## T-65 SS Capacity

		Branch tube outside diameter						
		mm	17,2	21,3	26,9	33,7	42,4	48,3
Run tube outside diameter	Tee range	17-19	20-25	25-30	30-34	34-44	45-54*	
	26,9	2,0	2,0	1,6				
	33,7	2,0	2,77	2,77	1,6	-	-	
	42,4	2,0	2,77	2,77	2,77	1,6	-	
	48,3	2,0	2,77	2,77	2,77	2,77	1,6	
	60,3	2,0	2,77	2,77	2,77	2,77	2,77	
	76,1	2,0	3,05	3,05	3,05	3,05	3,05	
	88,9	2,0	3,05	3,05	3,05	3,05	3,05	
	114,3	2,0	3,05	3,05	3,05	3,05	3,05	
	≤ 300	With optional clamping system						

## Cordless T-65B SS Capacity

		Branch tube outside diameter						
		mm	17,2	21,3	26,9	33,7	42,4	48,3
Run tube outside diameter	Tee range	17-19	20-25	25-30	30-34	34-44	45-54	
	26,9	2,0	2,0	1,6				
	33,7	2,0	2,0	2,0	1,6	-	-	
	42,4	2,0	2,0	2,0	2,0	1,6	-	
	48,3	2,0	2,0	2,0	2,0	2,0	1,6	
	60,3	2,0	2,0	2,0	2,0	2,0	2,0	
	76,1	2,0	2,0	2,0	2,0	2,0	2,0	
	88,9	2,0	2,0	2,0	2,0	2,0	2,0	
	114,3	2,0	2,0	2,0	2,0	2,0	2,0	
	≤ 300	With optional clamping system						

Max. wall thickness of stainless steel pipe (mm)  
\* Over 51 mm O.D. max. wall thickness 2,0 mm

## DO IT WITH T-DRILL

Cut costs – Improve quality – Increase profit

- No T-fittings
- No costly inventories
- No tube cutting

- Only one welded joint
- Minimized inspection cost
- Tee ratio variation flexibility

- Smaller risk of leakage
- Optimized flow-characteristics
- Hygienic, clean weld points

MANUFACTURER:

### T-DRILL

T-DRILL OY  
Ampujantie 32  
66400 Laihia, FINLAND  
Tel. +358 6 475 3333  
Telefax +358 6 475 3300  
sales@t-drill.fi, www.t-drill.fi

REPRESENTED BY:

T-DRILL Industries Inc.  
1740 Corporate Drive,  
Suite #820, Norcross,  
Georgia 30093 USA  
Tel. +1-770-925-0520,  
sales@t-drill.com  
www.t-drill.com